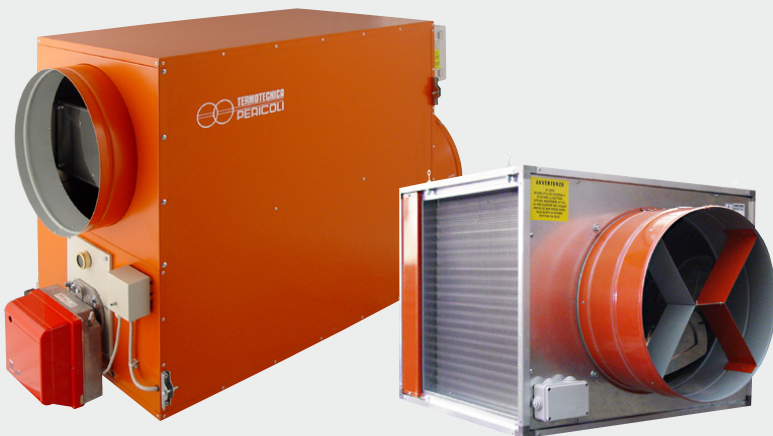


HEATING

INDIRECT AIR HEATERS FOR AGRICULTURAL APPLICATIONS

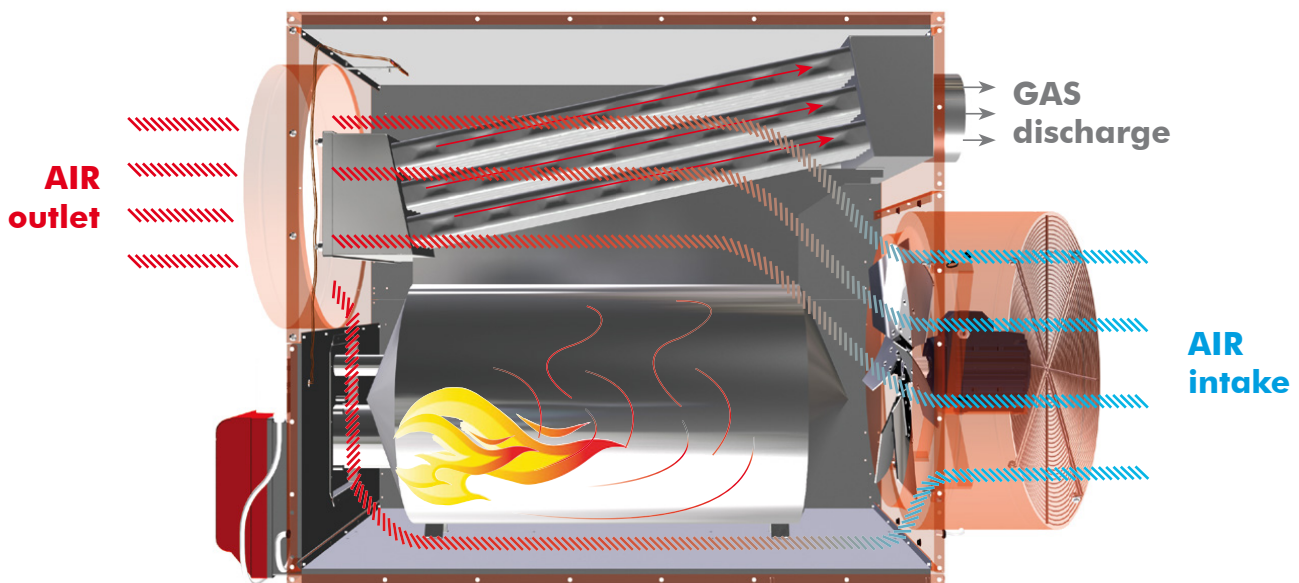


since
1967

combiTERM

INDIRECT AIR HEATER

The series **combiTERM** represents a new generation of indirect air heaters, whose main characteristic is application versatility. The unique stainless steel combustion chamber guarantees an efficient heat exchange between the exhaust smoke and the clean air released in the surrounding environment. The wallhousing can be accessorized with practical removable and replaceable elements, which allow the heater to be transformed from the suspended version to the wheeled or standing one; different air outlets are also available. Easy handling, transport and installation are assured by the high quality, the state-of-the-art performances and the innovative design of the wallhousing and of the accessories. This heater can run on diesel, LPG or natural gas.



Technical features

combiTERM



Standard base module



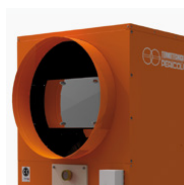
Horizontal base module



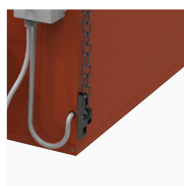
DHD
Directable diffuser



TEE
Frontal "T" double outlet



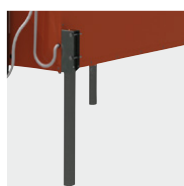
PHE
Round hot air outlet
both for direct
air diffusion and
canalization



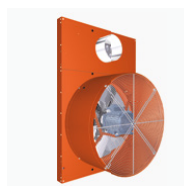
SHK
Practical hooks
for suspended
installation



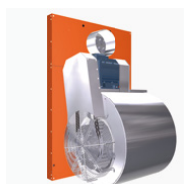
WSK
Wheels for mobile
installation



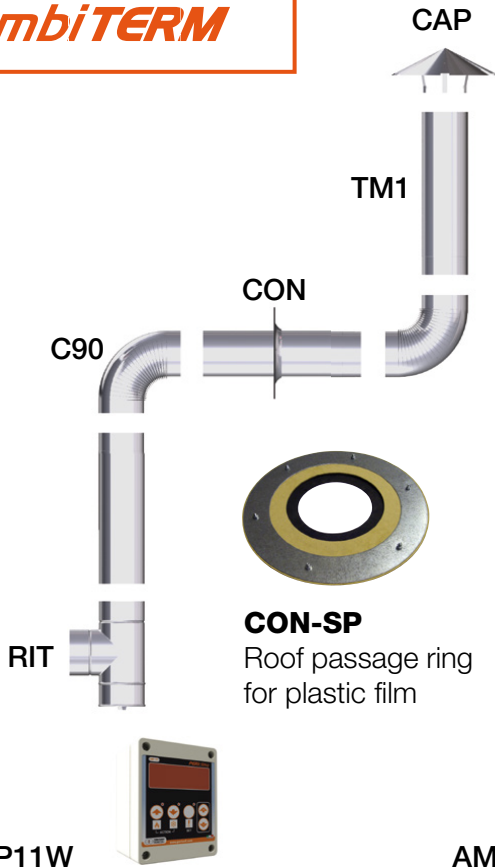
KST
Standing kit for
installation on the floor



E
Axial fan



C
Centrifugal fan,
recommended when
air canalization is
needed



TM1
Stainless steel chimney pipe, 1 mt length

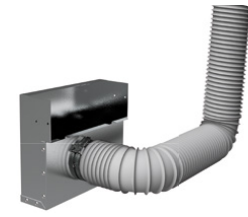
CAP
Stainless steel cap for chimney pipe

C90
Stainless steel elbow 90°

CON
Galvanised steel roof plate for fixing the chimney pipe to the wall or the roof of the building

RIT
Stainless steel "T" union with inspection cover

CON-SP
Roof passage ring for plastic film



OAI
Outside air inlet
Available upon request for different models of oil and gas burners



PLG
1 m extension for PHE

HP11W
Electronic thermostat with digital display for accurate temperature control



AMDR-1
Mechanical thermostat, an economical solution for temperature control



RPE
Double stage pressure regulator for LPG gas.
Pin = 0,53 – 1,95 bar
Pout = 30 – 35 mbar
Flow rate up to 20 kg/h



Technical features

Model		35	60	100	140	190	240	35	60	100	140	190	
Propeller		Centrifugal (C-X)*						Axial (E-X)*					
Thermic power	Kcal/h kW	30'630 35,6	52'071 60,5	82'701 96,2	124'562 144,8	166'423 193,5	206'242 239,8	30'630 35,6	52'071 60,5	82'701 96,2	124'562 144,8	166'423 193,5	
Thermic yield	%	90,2	90,3	91,5	90,2	90,1	90	90,2	90,3	91,5	90,2	90,1	
Oil consumption	Kg/h	3	5,1	8,1	12,2	16,3	20,2	3	5,1	8,1	12,2	16,3	
Methane G20 consumption	m³/h	3,8	6,4	10,2	15,3	20,5	25,4	3,8	6,4	10,2	15,3	20,5	
G30 consumption	Kg/h	2,8	4,8	7,6	11,4	15,3	18,9	2,8	4,8	7,6	11,4	15,3	
G31 consumption	Kg/h	2,8	4,7	7,5	11,3	15	18,6	2,8	4,7	7,5	11,3	15	
Nom. fan motor power	kW	0,2	1,3	1,5	2,2	3	4	0,37	0,55	0,75	1,5	2,2	
Propeller	mm	10/10	12/9	12/12	15/15	18/13	18/18	Ø 400	Ø 460	Ø 510	Ø 610	Ø 650	
Available air displacement (with accessory PHE)	m³/h	2'600	5'100	7'000	12'300	14'200	18'500	2'800	3'500	5'600	10'300	11'500	
Available static pressure	Pa	130	200	210	210	210	230	50	50	60	60	70	
Thermal gradient	°C	36,1	29,9	32,1	35,3	37,9	36,8	30,8	32	32,3	38,6	38,3	
Voltage	V	230 1~N ±	230/400 3~N ±	230/400 3~N ±	230/400 3~N ±	230/400 3~N ±	230/400 3~N ±	230 1~N ±	230/400 3~N ±	230/400 3~N ±	230/400 3~N ±	230/400 3~N ±	
Frequency	Hz	50 60	50 60	50 60	50 60	50 60	50 60	50 60	50 60	50 60	50 60	50 60	
Protection grade	IP	55	55	55	55	55	55	55	55	55	55	55	
Chimney diameter	mm	150	150	180	200	250	250	150	150	180	200	250	
Noise level at 7 m	db (A)	52	63	65	65	70	72	63	67	68	70	76	
Range of application	°C	-20 +50	-20 +50	-20 +50	-20 +50	-20 +50	-20 +50	-20 +50	-20 +50	-20 +50	-20 +50	-20 +50	

*Available only for extra EU markets

Note:
The country of destination is to be specified for each order.



Technical features, dimensions and loading possibilities

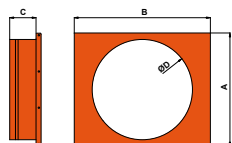
combiTERM

Model	GAS				OIL							
	100 E	100 C	140 C	240 C	100 E	100 C	140 E	140 C	190 E	190 C	240 C	
Propeller	Axial	Centrifugal	Centrifugal	Centrifugal	Axial	Centrifugal	Axial	Centrifugal	Axial	Centrifugal	Centrifugal	
Thermic power (Hi)	kW	100	100	150	240	95	95	150	150	190	190	240
Thermic yield (Hi)	%	91	91	90,5	91	92	92	90	90	91	91	91
Oil consumption	kg/h	-	-	-	-	8	5,9/8	10,1/12/6	10,1/12/6	16,1	16,1	13/20,2
Methane G20 consumption	Nm³/h	10,6	10,6	15,9	25,4	-	-	-	-	-	-	-
G30 consumption	kg/h	7,9	7,9	11,8	18,9	-	-	-	-	-	-	-
G31 consumption	kg/h	7,8	7,8	11,6	18,6	-	-	-	-	-	-	-
Nom. fan motor power	kW	0,75	1,5	2,2	4	0,75	1,5	1,5	2,2	2,2	3	4
Propeller	-	Ø 510mm	12/12	15/15	18/18	Ø 510mm	12/12	Ø 610mm	15/15	Ø 650mm	18/13	18/18
Fan air flow	m³/h	8.900	8.950	12.250	19.450	8.900	8.950	12.250	12.250	15.100	15.250	19.450
Available air displacement (with accessory PHE)	m³/h	7.800	7.900	11.300	17.200	7.800	7.900	9.800	11.300	13.400	14.100	17.200
Available static pressure	Pa	60	210	210	230	60	210	60	210	70	210	230
Thermal gradient	°C	52	52	46	50	46	46	49	49	41	41	57
Electrical nominal power (with burner)	kW	1,4	2,6	3,4	6,1	1,4	2,6	2,7	3,5	3,8	4,9	6,2
Homologated burner	-	BS3/BS3D	BS3/BS3D	BS3/BS3D	BS4/BS4D	BG6.1D	BG6.1D	BG7.1D	BG7.1D	RL25Blu	RL25Blu	RL25Blu
Protection grade (with burner)	IP	40	40	40	40	40	40	40	40	54	54	54
Chimney diameter	mm	180	180	200	250	180	180	200	200	250	250	250
Noise level at 7 m	dB (A)	68	65	65	72	68	65	70	65	76	70	72
Range of application	°C	0/+40	0/+40	0/+40	0/+40	0/+40	0/+40	0/+40	0/+40	0/+40	0/+40	0/+40

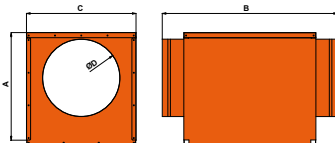
Voltage: Δ 220-240 Y 380-420 - 50Hz

Note:

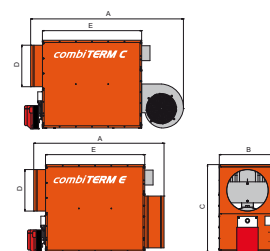
The country of destination is to be specified for each order.



PHE	A	B	C	D	Weight (Kg)
35	385	512	110	340	2
60	450	572	110	395	3
100	559	672	130	495	4
140	629	760	130	595	5,5
190	730	862	130	695	7
240	770	992	130	695	8



TEE	A	B	C	D	Weight (Kg)
35	449	732	385	340	12,5
60	449	792	450	340	15
100	549	892	559	395	20
140	549	980	629	395	24
190	649	1122	730	495	32
240	649	1252	770	495	37



Model	35	60	100	140	190	240	35	60	100	140	190	
Propeller	Centrifugal (C-X) (C)						Axial (E-X) (E)					
Length (A)	mm	1'383	1'658	1'884	2'095	2'295	2'444	1'183	1'393	1'681	1'840	2'060
Width (B)	mm	512	572	672	760	862	992	512	572	672	760	862
Height (C)	mm	764	916	1'046	1'136	1'290	1'362	764	916	1'046	1'136	1'290
Diameter PHE (D)	mm	340	395	495	595	695	695	340	395	495	595	695
Base (E)	mm	767	966	1184	1297	1377	1507	767	966	1184	1297	1377
Weight	Kg	103,5	147,5	230	260	324	390	94,5	128,5	205	235	289

Model	35	60	100	140	190	240	35	60	100	140	190	
Propeller	Centrifugal (C-X) (C)						Axial (E-X) (E)					
Container 20ft	28	24	16	12	6	5	36	28	20	15	6	
Container 40ft	64	48	34	27	13	12	76	58	42	30	13	
Truck	48	33	22	19	15	13	52	37	28	22	15	

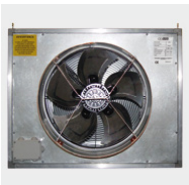
F-OTB

DIRECT-DRIVEN JET-FAN

The jet-fan was developed to transfer the heat, produced by an external water boiler to the air passing through the special copper/aluminium exchangers. The fan can efficiently distribute the hot air in the surrounding space both directly and through canalization. It is characterized by a sturdy steel wallhousing with two water/air heat exchangers and axial electric fan for air diffusion. **F-OTB** was specially developed to solve heating, ventilation, air circulation and humidity problems in agricultural and industrial environments where it is important to maintain steady conditions.



FIZ impurity filter pair
(optional)



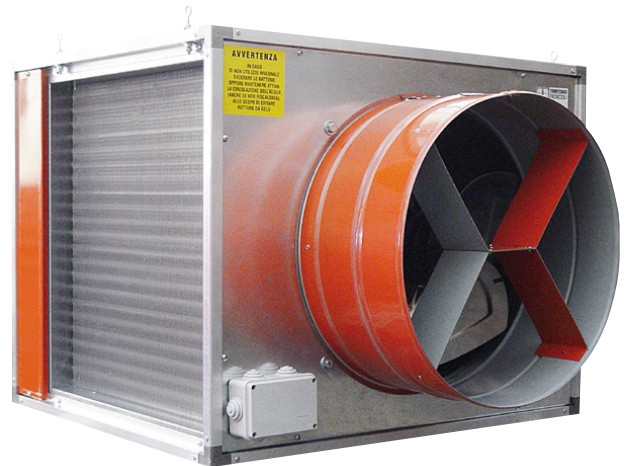
Direct driven high
efficiency fan



Battery in copper/
aluminum for a higher
efficiency and longer
lifetime



4 suspension
eyes included



Technical features

F-OTB

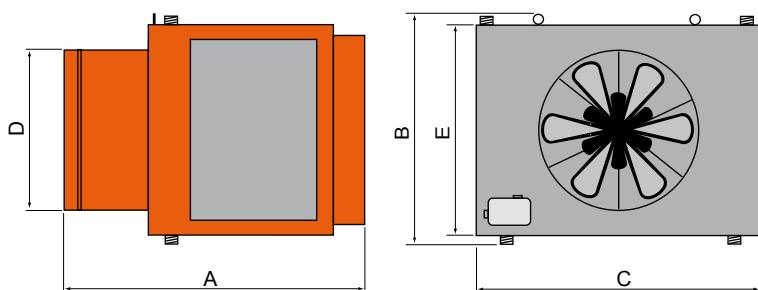
Model		550-2	550-3	600-3	700-3
Thermic power	Kcal/kW	45.000 / 52	60.000 / 69	80.000 / 93	100.000 / 116
Pressure drop through radiators	m/H ρ O	0,25	0,86	1,16	1,25
Water flow rate	(l/h)	4.500	6.000	8.000	9.930
Radiators per fan	n.	2	2	2	2
Coils per radiator	n.	2	3	3	3
Pipes per radiator	n.	11	11	12	14
Frontal radiator surface area	dm ²	30,25	30,25	36	49
Water pipe diameter	inch"	1"/1/4	1"/1/4	1"/1/4	1"/1/2
Fan air displacement	m ³ /h	6.000	6.000	8.000	10.000
Fan revolution	rpm	1.380	1.380	1.380	1.000
Fan motor power	kW	0,5	0,5	0,8	0,8
Voltage - Frequency*	v	230/400 - 50	230/400 - 50	230/400 - 50	230/400 - 50
Noise level at 5 m	db (A)	53	53	55	51

*60Hz version available upon request

Note:

All data in the above chart refer to the following conditions: water inlet temperature +75°C, water outlet temperature +65°C, air inlet temperature +15°C

Dimensions and loading possibilities



Model	550-2	550-3	600-3	700-3
A [mm]	970	970	1.020	1.120
B [mm]	725	725	775	870
C [mm]	655	655	705	800
D [mm]	470	470	520	640
E [mm]	655	655	705	800
Weight [kg]	66	68	72	83

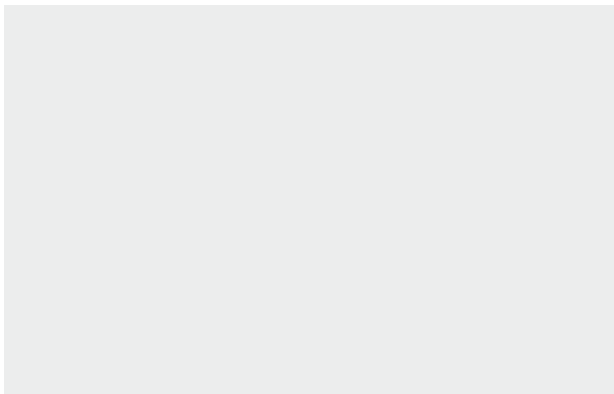
Loading possibilities on pallet

Model	550 / 600		700	
LxWxH [mm]	1100x1100x2000	900x850x1200	1200x1150x2100	1100x1050x1250
N° of pieces	2	1	2	1
Gross weight - kg]	155	85	181	98

Loading possibilities

Model	550 / 600	700
Container 20ft	20	16
Container 40ft	40	36
Truck	30	24

All data in this catalogue are indicative and are subject to change without prior notice.



TERMOTECNICA PERICOLI S.r.l.
Regione Rapalline, 44 - 17031 Albenga, Italia
tel. 0182 589006 fax 0182 589005 pit@pericoli.com

PERICOLI ASIA PACIFIC Sdn. Bhd.
pap@pericoli.com

PERICOLI CENTRO AMERICA
pca@pericoli.com

PERICOLI MIDDLE EAST
pme@pericoli.com

PERICOLI INDIA Pvt. Ltd.
pin@pericoli.com

pericoli.com



PERICOOL sono marchi registrati di Termotecnica Pericoli S.r.l.